

Circuit Patterns & Noise Abatement

Circuits

Different circuit patterns exist for fixed wing aircraft and helicopters at Goodwood. Fixed wing aircraft departing Runways 14 and 32 must make their noise abatement turn at the upwind end of the runway, and not before, to avoid confliction with helicopter circuit traffic (see diagram below Noise Abatement Procedures - Fixed Wing / Heli Circuits).

All aircraft to avoid flying over Chichester, Lavant, Westerton, Westhampnett or Summersdale.

Fixed Wing Aircraft

Fixed wing circuit height is 1,200 FT QFE (helicopter circuit height is 800 FT QFE). Fixed wing aircraft should make an overhead join at 2,000 FT QFE.

Noise Abatement Procedures

Runway 06.

Landing: No low approaches over the built up-areas in the undershoot.

Runway 24.

Take off: Turn right as soon as practicable to do so and establish a westerly track. Maintain track until west of built-up areas. If remaining in the circuit, ensure that crosswind and downwind track is west/northwest of Lavant village. No practice engine failures are permitted until west of the A286, Lavant Road. No low level circuits are permitted on Runway 24. Avoid overflight of Lavant village.

Runway 14.

Take-off: Turn left 10° at the upwind end of Runway 14 to avoid overflying the school and fields of horses under the climb out path. No practice engine failures after take-off until well clear of the school and houses. Do not exceed the 10° left turn to avoid conflicting with the helicopter circuit.
Landing: No low approaches over East Lavant village.

Runway 32.

Take-off: Turn right 10° at the upwind end of Runway 32 to avoid East Lavant village. Maintain that heading until well beyond the village. No practice engine failures after take-off until well beyond East Lavant village. Do not exceed the 10° right turn to avoid conflicting with the helicopter circuit.

Runway 10.

Take-off: Turn left 10° at the upwind end of the runway to avoid overflying Westerton village.

Runway 28.

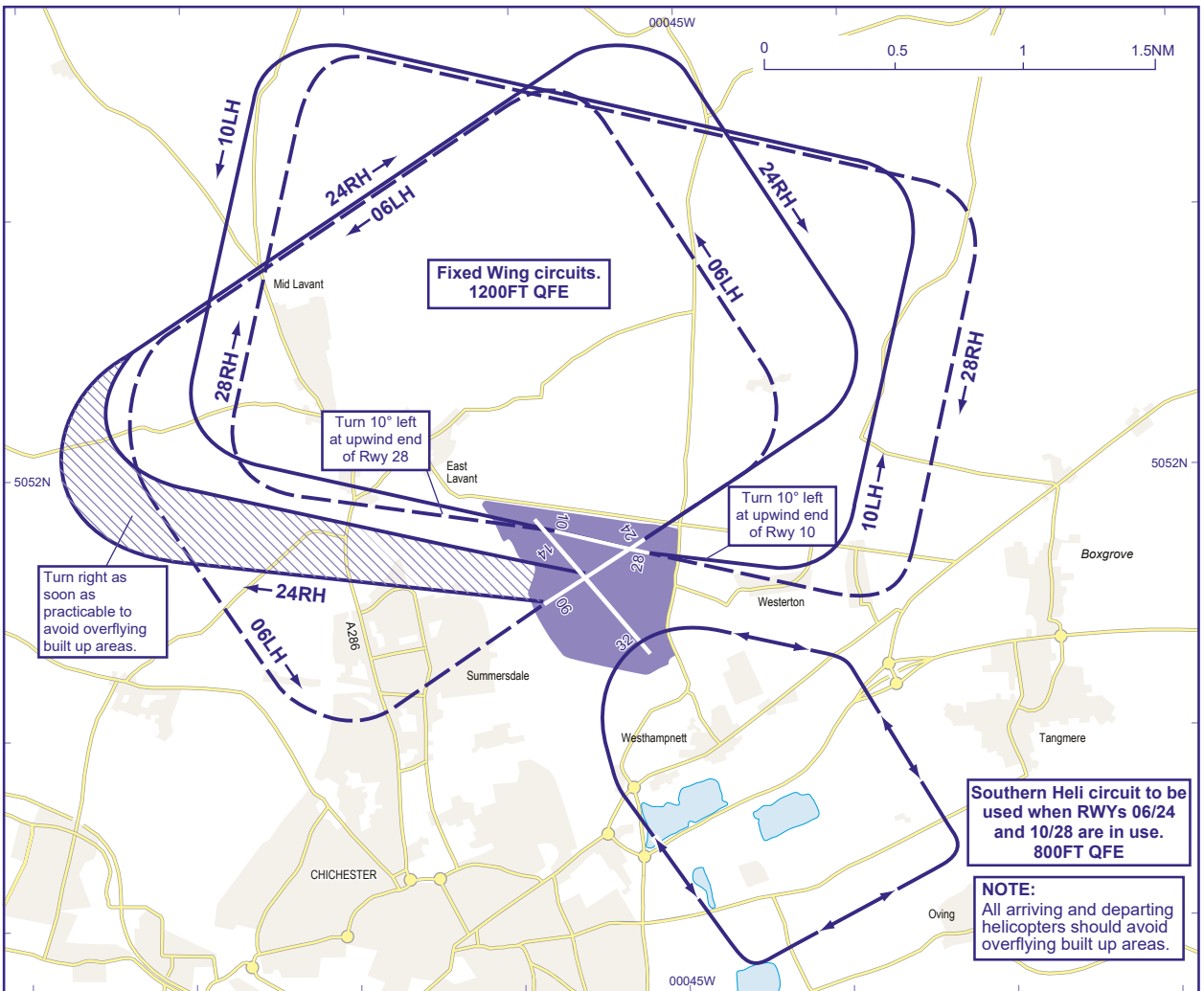
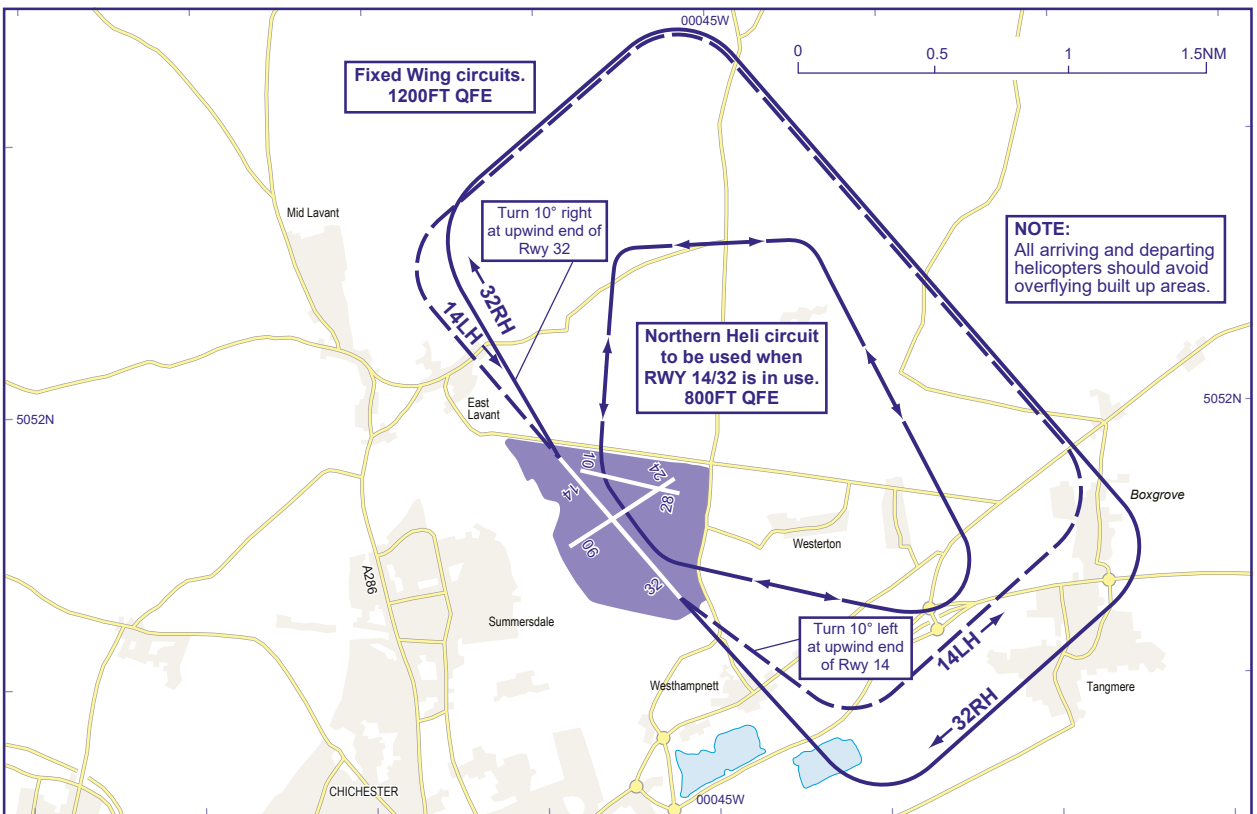
Take-off: Turn left 10° at the upwind end of the runway to avoid overflying Lavant village.

Helicopters

Helicopter circuit height is 800 FT QFE.

The southern helicopter circuit shall be flown when Runways 06, 10, 24 and 28 are in use.
The northern helicopter circuit shall be flown when Runways 14 and 32 are in use.

Please note all aircraft must avoid flying over Pagham Harbour Nature Reserve below 500 FT AGL.



CHANGE (2/23): CHART TITLE, FIXED WING AND HELICOPTER CIRCUITS REVISED.